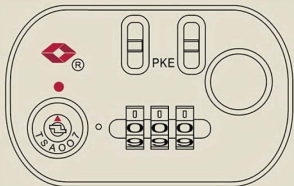


luggage
it



COMBINATION TSA LOCK®

Using this Travel Sentry® Approved lock allows your luggage to be unlocked and inspected by security authorities without damage.



WARNING: If the lock has been opened please ensure that the cylinder is rotated back to the locked position as indicated by the arrow. (Any "tool" which can be inserted into the cylinder and rotate to lock)

 **TSA LOCK®**

luggage
it



 **TSA**
ACCEPTED

TRAVEL SENTRY®
APPROVED

INSTRUCTIONS FOR USE

The manufacturer code for this lock is 000.

To set a personal combination please follow these simple steps:

- 1) Open the case and unzip the lining to access the rear of the lock.
- 2) Push the red switch to the right and up position (Fig 1)
- 3) Turn the number wheels to your personal code.
- 4) Push the red switch inside the case to the down and left position (Fig 2)
- 5) Close case and zip up, inserting zip pullers firmly into the locks.
- 6) Scramble your personal combination.

Your case is now secure. To unlock simply set the wheels to your combination and press the button to release the pullers.

FIG 1

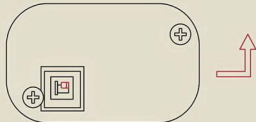


FIG 2



 **TSA LOCK®**